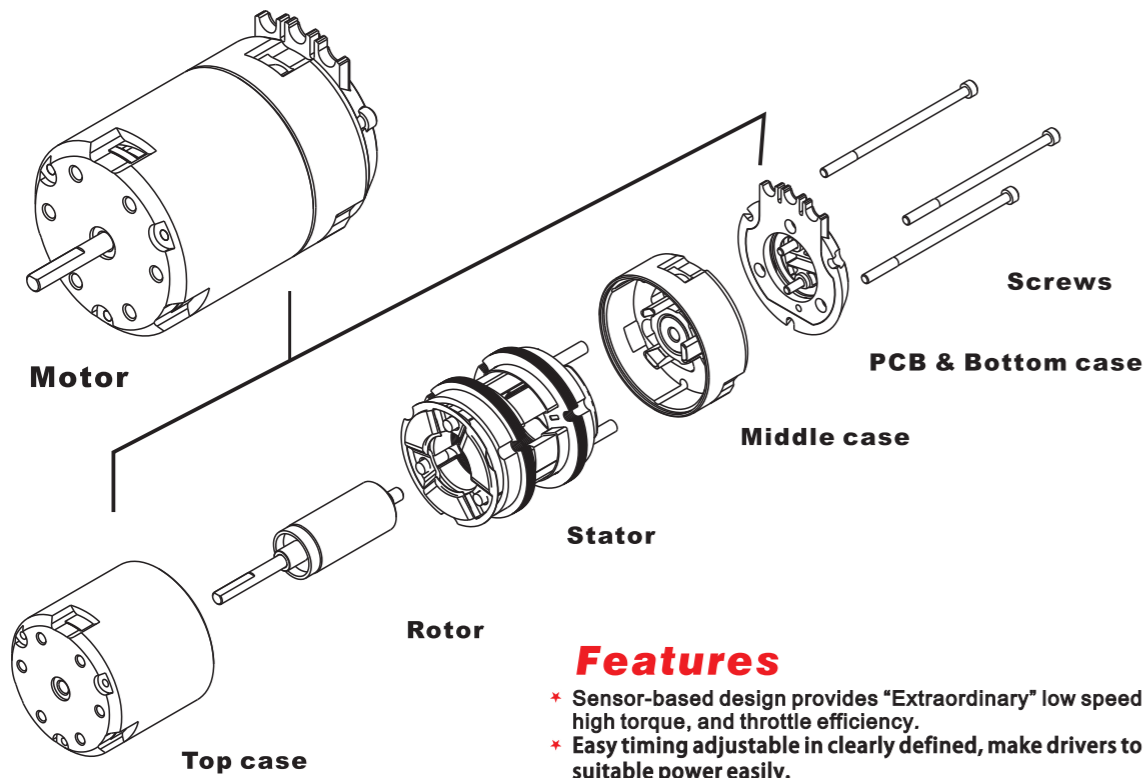


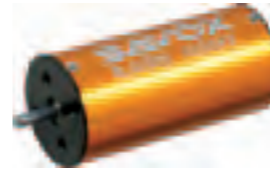
## Sensored Brushless Motor Structure



### Features

- \* Sensor-based design provides "Extraordinary" low speed drivability, high torque, and throttle efficiency.
- \* Easy timing adjustable in clearly defined, make drivers to adjust and find the suitable power easily.
- \* Easy structure- only uses 3 screws, easy to assemble and change the parts.
- \* Aluminum can with special design for CNC machine, light-weight design and efficiency airflow to lower the temperature.
- \* High-end Sintered Neodymium magnet and grade, for best efficiency and average torque.
- \* High quality stator minimized core loss for lowest temperature and best efficiency.
- \* High quality precise sensor position for best power, throttle and efficiency.

BLS-2856



BLS-2836



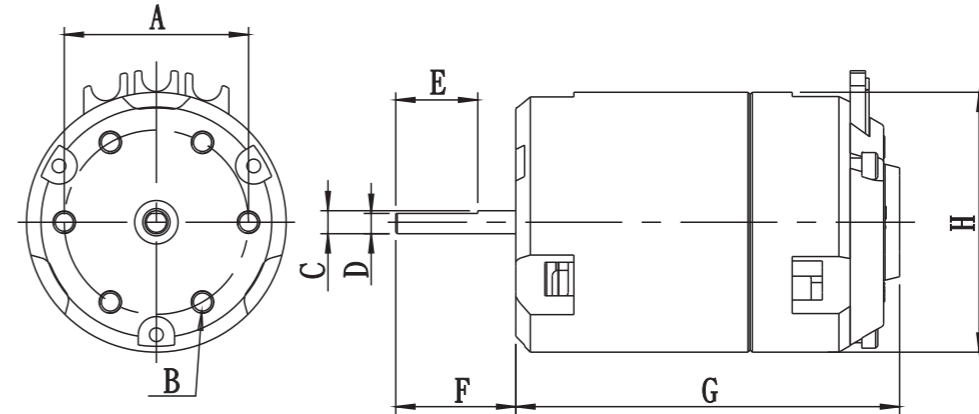
BLS-2040



BLS-2030



BLS-2236



## Brushless Inner Runner Motor

Item no.	RPM/V (KV)	Dimension (mm)	Shaft size (mm)	Max. current (A)	Max. power (W)	Weight	Voltage	A	B	C	D	E	F	G	H
BLH-3670	4600	Ø 35.8 * 70.0 (Ø 1.41" * 2.76")	Ø 5.00 * 76.46	77	924	250.0g (8.82oz)	4-10 NiCd/NiMH 2-3s LiPo	Ø 25.4	M3*0.5p	Ø 5	4.5	12.2	16.35	70	35.8
BLH-3650	8000 6400 5600 4900 4400 3900 3550 2950 2200 1800 1600	Ø 35.8 * 52.9 (Ø 1.41" * 2.08")	Ø 3.17 * 59.43	79 65 55 50 48 45 42 33 25 20 18	584 481 407 370 355 333 310 244 185 148 133	180.0g (6.4oz)	4-6 NiCd/NiMH 2s LiPo	Ø 25.4	M3*0.5p	Ø 3.175	2.8	11.3	16.55	52.9	35.8
BLS-4570	1800	Ø 45.0 * 71.0 (Ø 1.77" * 2.80")	Ø 5.00 * 88.00	50	1110	539.0g (19.0oz)	4-12 NiCd/NiMH 2-6s LiPo	Ø 25	M3*0.5p	Ø 5	4.5	12.2	19.3	71	45
BLS-4069	2000	Ø 40.0 * 70.0 (Ø 1.57" * 2.76")	Ø 5.00 * 87.00	65	1443	448.8g (15.8oz)	4-12 NiCd/NiMH 2-6s LiPo	Ø 25.4	M4*0.7p	Ø 5	4.5	12.2	19.3	70	40
BLS-3661S	1500 3000 5000	Ø 36.0 * 61.0 (Ø 1.42" * 2.40")	Ø 3.17 * 76.00 Ø 5.00 * 76.00	40 50 67	592 740 991	242.5g (8.6oz)	4-12 NiCd/NiMH 2-4s LiPo	Ø 25	M3*0.5p	Ø 5	4.5	13	21	61	36
BLS-3661	3000 4000	Ø 36.0 * 61.0 (Ø 1.42" * 2.40")	Ø 5.00 * 76.00	45 55	666 814	285.3g (10.1oz)	4-12 NiCd/NiMH 2-4s LiPo	Ø 25.3	M3*0.5p	Ø 3.17 or Ø 5	4.5	13	16.35	61	36
BLS-3650S	3600	Ø 36.0 * 50.0 (Ø 1.42" * 1.97")	Ø 3.17 * 63.40	35	504	200.0g (7.1oz)	4-12 NiCd/NiMH 2-3s LiPo	Ø 25.3	M3*0.5p	Ø 3.17	2.9	13	15.15	50	36
BLS-3650	3000 3500 4000 5000 7000	Ø 36.0 * 50.0 (Ø 1.42" * 1.97")	Ø 3.17 * 62.80 Ø 5.00 * 62.80	45 45 45 60 68	648 648 648 864 979	221.2g (7.8oz)	4-12 NiCd/NiMH 2-3s LiPo	Ø 25.3	M3*0.5p	Ø 3.17 or Ø 5	2.87	12.2	15.15	49	36
BLS-2856	1500 3000 5000	Ø 28.0 * 56.0 (Ø 1.10" * 2.20")	Ø 3.17 * 65.60	16 25 35	230 360 504	167.2g (5.9oz)	4-12 NiCd/NiMH 2-3s LiPo	Ø 16 or Ø 19	M3*0.5p	Ø 3			10	56	27.6
BLS-2836	3000 3700 5000	Ø 28.0 * 36.0 (Ø 1.10" * 1.42")	Ø 2.30 * 48.30 Ø 3.17 * 48.30	15 16 25	166 177 277	91.0g (3.2oz)	4-8 NiCd/NiMH 2-3s LiPo	Ø 16 or Ø 19	M3*0.5p	Ø 3.17	2.9	8	12.7	36	27.6
BLS-2236	3000	Ø 22.0 * 36.0 (Ø 0.87" * 1.42")	Ø 2.00 * 46.00	13	144	53.0g (1.87oz)	4-8 NiCd/NiMH 2-3s LiPo	Ø 12.5 or Ø 14 or Ø 16	M2.5*0.45p	Ø 2	1.8	8	10.8	36	22
BLS-2040	2250 3000 3700 4200 5000 7000	Ø 20.0 * 40.0 (Ø 0.79" * 1.57")	Ø 2.30 * 54.30	9 12 13 14 15 17	99 133 144 155 166 188	65.6g (2.3oz)	4-8 NiCd/NiMH 2-3s LiPo	Ø 16	M2.5*0.45p	Ø 2.3			12.8	42	20
BLS-2030	3700 4000 5000 6000 7000	Ø 20.0 * 30.0 (Ø 0.79" * 1.18")	Ø 2.30 * 44.30	7 8 9 10 11	77 88 99 111 122	46.1g (1.6oz)	4-8 NiCd/NiMH 2-3s LiPo	Ø 16	M2.5*0.45p	Ø 2	1.7	8	10.81	34	20

BLH-3650

BLH-3670

BLS-4069



BLS-3661S

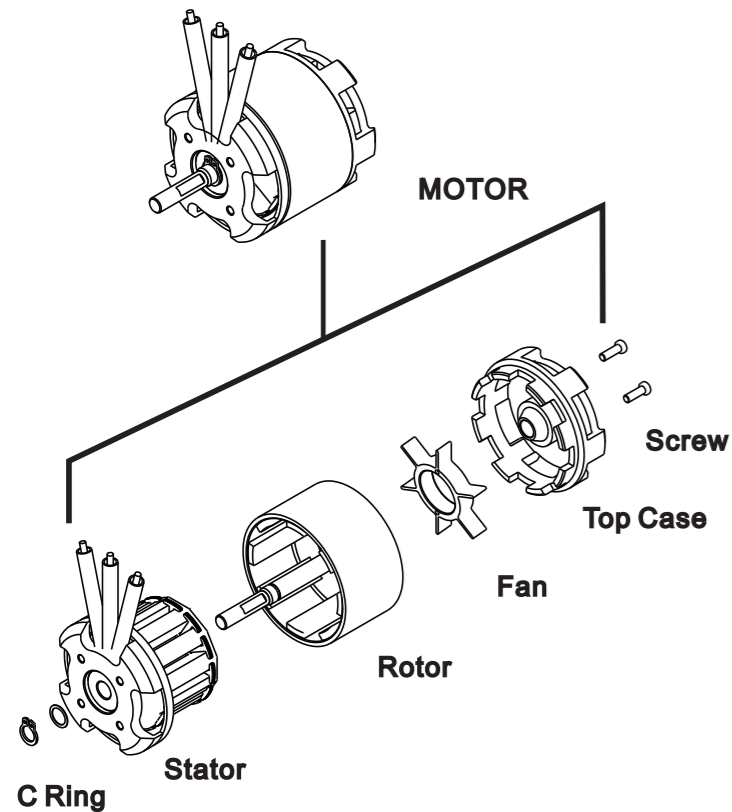
BLS-3661

BLS-3650S

BLS-3650



## Brushless Outer Runner Motor



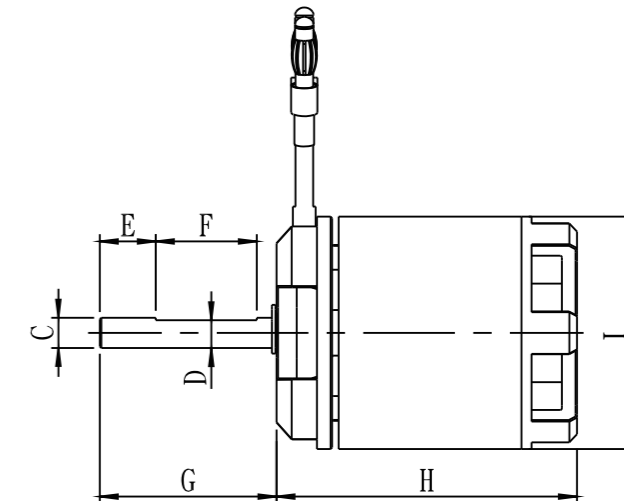
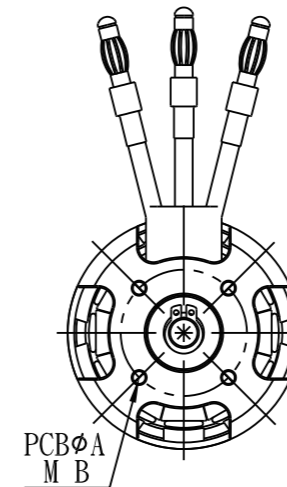
- Unique cooling system design (Savox patent) Machined aluminum housing with 6 angled cooling holes and add cooling fan into our motor that help to pump air through the motor while it runs the temperature is 10% lower than others.
- Durable black Electro-Coat finish on the flux ring. Our logo and item number all made by high technical of laser print on each motor instead of using a sticker to help maintain the balance of the motor.
- High quality stator plates are epoxy coated on the inner surface to prevent winding shorts. 0.20mm stator plates are used on the our motors.
- High temperature 180 °C (356 °F) rated wire is used for winding the burning up the motor. The motors are also machine wound to ensure consistant winds.
- High quality shielded and ball bearings are used to support the shaft in all our motors.
- High temperature adhesives are used to secure the stator windings and prevent them from shifting and getting pinched or shooting out.

**BSM-4750**

**BSM-4050**

**BSM-3750**

**BSM-2940**



**BSM-6364**

**BSM-5055**

**BSM-4760**



Item no.	RPM/V (KV)	Dimension (mm)	Shaft size (mm)	Max. current (A)	Max. power (W)	Weight	Voltage	A	B	C	D	E	F	G	H	I
BSM-6364 pro	440	Ø 63.0 * 64.0 (Ø 2.48" * 2.52")	Ø 6.00 * 114.0	95	4200	759.0g (26.77oz)	3-12s LiPo	Ø 30	M4x0.7P x4	Ø 6	5.5	20	15	50	64	Ø63
BSM-5065 pro	450 500 530	Ø 50.0 * 63.5 (Ø 1.97" * 2.5")	Ø 6.00 * 109.5	97 100 95	4200 4400 4200	454.0g (16.1oz)	3-12s LiPo 3-12s LiPo 3-12s LiPo	Ø 30	M4x0.7P x4	Ø 6	5.5	29.4	15	46	63.5	Ø50
BSM-5055 pro	550	Ø 50.0 * 53.2 (Ø 1.97" * 2.09")	Ø 6.00 * 88.2	95	4000	363.0g (12.8oz)	3-12s LiPo	Ø 25	M3x0.5P x4	Ø 6	5.5	11.1	20	35	53.2	Ø50
BSM-4760 BSM-4760 pro	500 530 1200	Ø 46.0 * 59.5 (Ø 1.81" * 2.34")	Ø 6.00 * 94.5	83 70 134	3560 3000 2780	358.0g (12.63oz)	3-12s LiPo 3-12s LiPo 3-6s LiPo	Ø 25	M3x0.5P x4	Ø 6	5.5	11.1	20	35	59.5	Ø46
BSM-4750 BSM-4750 pro	1200 1200	Ø 46.0 * 49.5 (Ø 1.81" * 1.95")	Ø 5.00 * 84.5 Ø 5.00 * 84.5	104 104	2200 2200	270.0g (9.52oz)	3-6s LiPo 3-6s LiPo	Ø 25	M3x0.5P x4	Ø 5	4.7	11.1	20	35	49.5	Ø46
BSM-4050 pro	1200 1300	Ø 40.0 * 48.1 (Ø 1.57" * 1.89")	Ø 5.00 * 73.1	99 90	2100 1900	215.0g (7.58oz)	3-6s LiPo 3-6s LiPo	Ø 25	M3x0.5P x4	Ø 5	4.4	0	15	25	48.1	Ø40
BSM-3750 pro	1200 1300	Ø 37.0 * 50.0 (Ø 1.46" * 1.97")	Ø 5.00 * 71.0	99 90	2100 1880	184.0g (6.49oz)	3-6s LiPo 3-6s LiPo	Ø 25	M3x0.5P x4	Ø 5	4.4	0	15	21	50	Ø37
BSM-2940 BSM-2940 pro	3500 3500	Ø 29.0 * 37.65 (Ø 1.14" * 1.48")	Ø 3.5 * 53.15 Ø 3.5 * 53.15	51 51	538 538	71.0g (2.5oz)	2-4s LiPo 2-4s LiPo	Ø 19 Ø 16	M3x0.5P M3x0.5P	Ø 3.5	-	0	0	15.5	37.65	Ø29